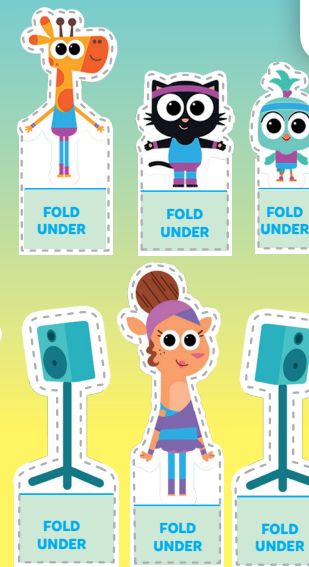


Build a Theatre Stage



- 1 Ask a grown-up to help you with scissors.
- 2 Carefully cut out the stage set and fold along the blue lines.
- 3 Using glue, stick the folded tabs to the back of the stage front.
- 4 Cut out the characters and props, fold under their tabs and place them on the stage.



amazing
TO BE A
DANCER!